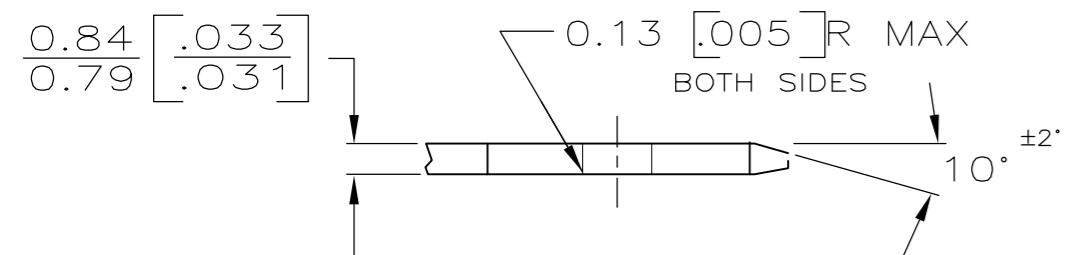
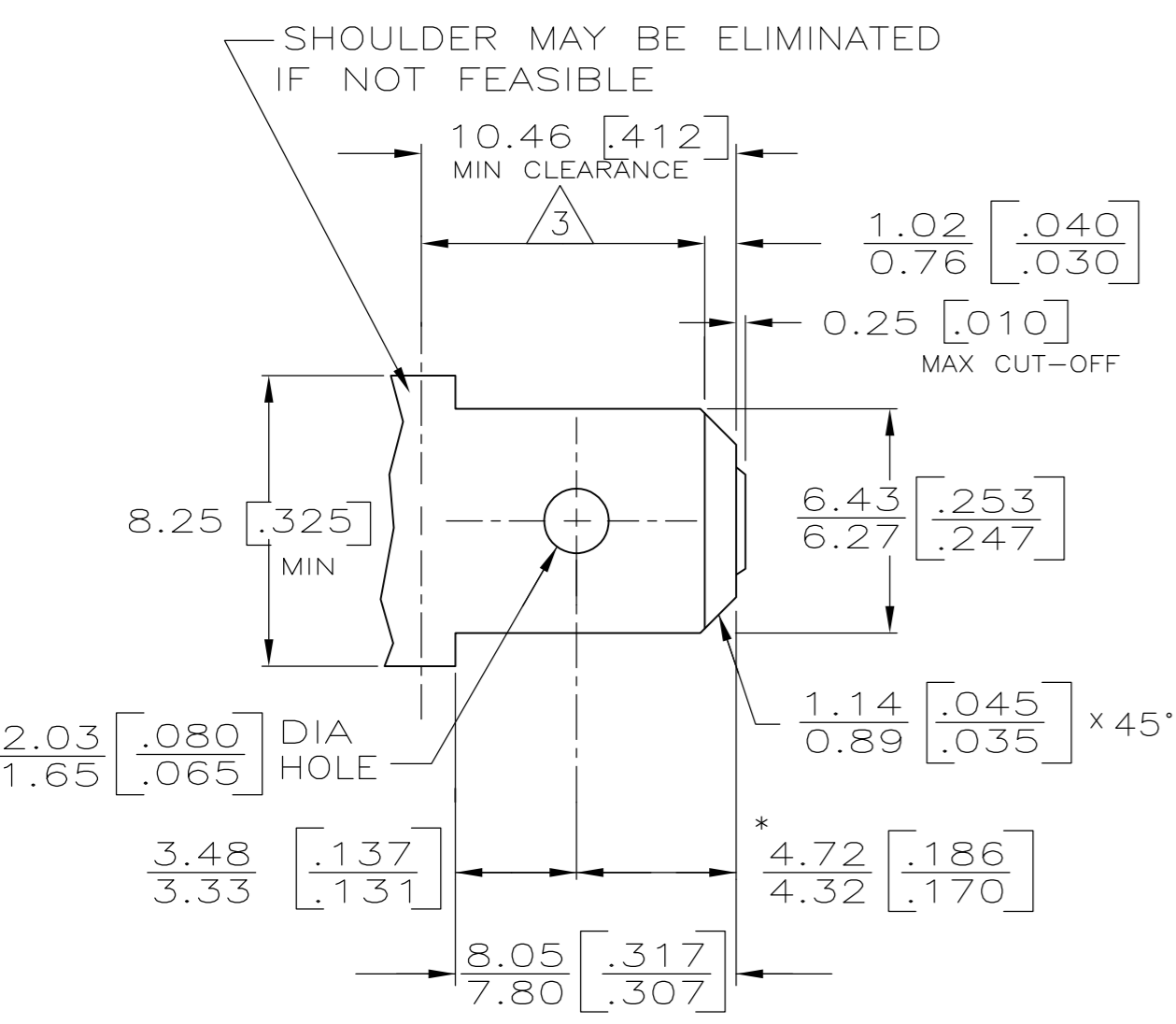


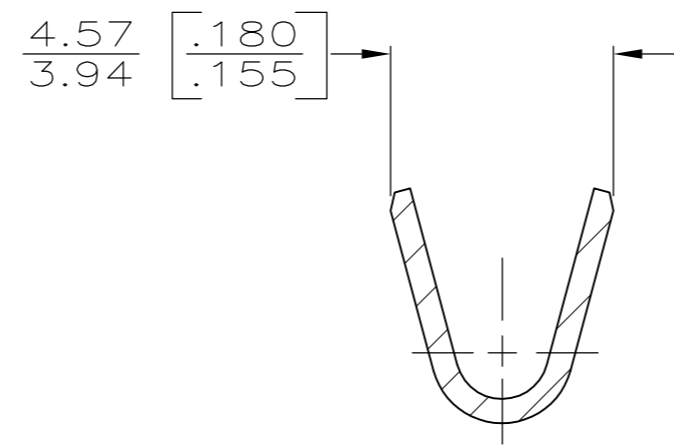
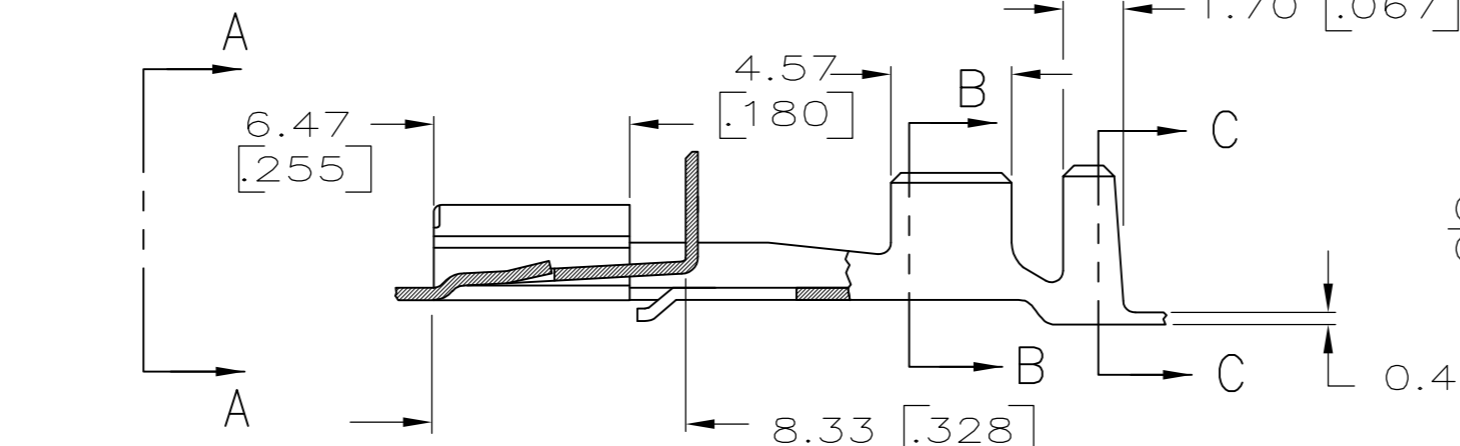
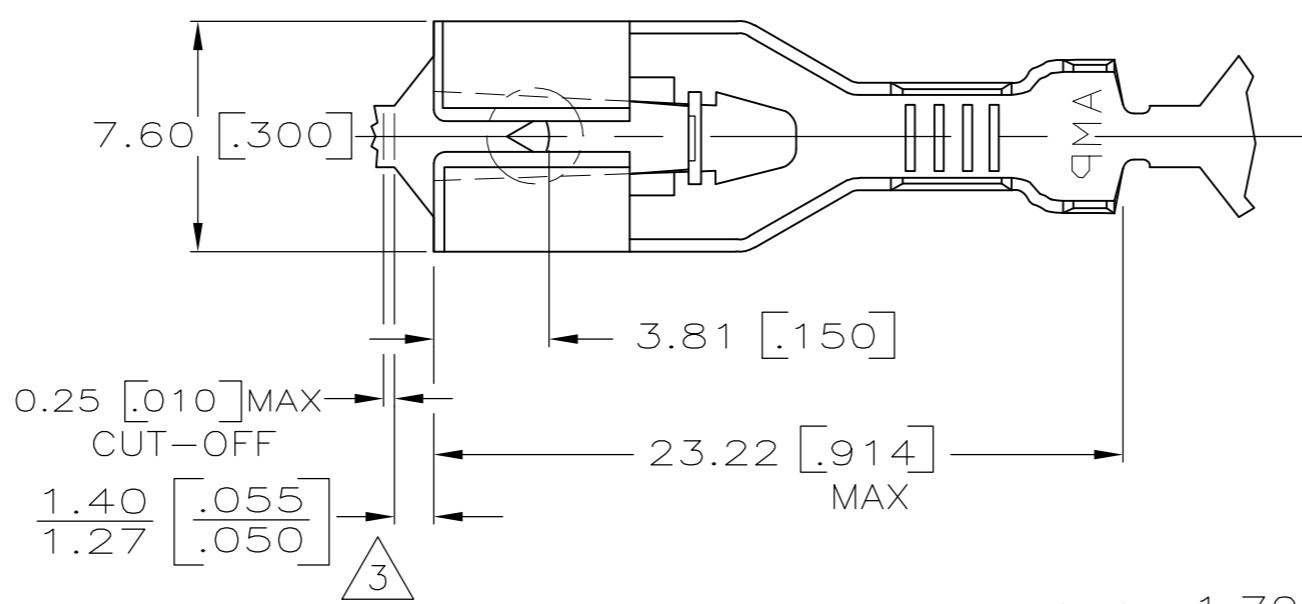
THIS DRAWING IS UNPUBLISHED. RELEASED FOR PUBLICATION. ALL RIGHTS RESERVED.

LOC		DIST		REVISIONS					
AF		50		P	LTR	DESCRIPTION	DATE	DWN	APVD
				L		REVISED PER ECR-12-013486	08JAN13	KH	KR

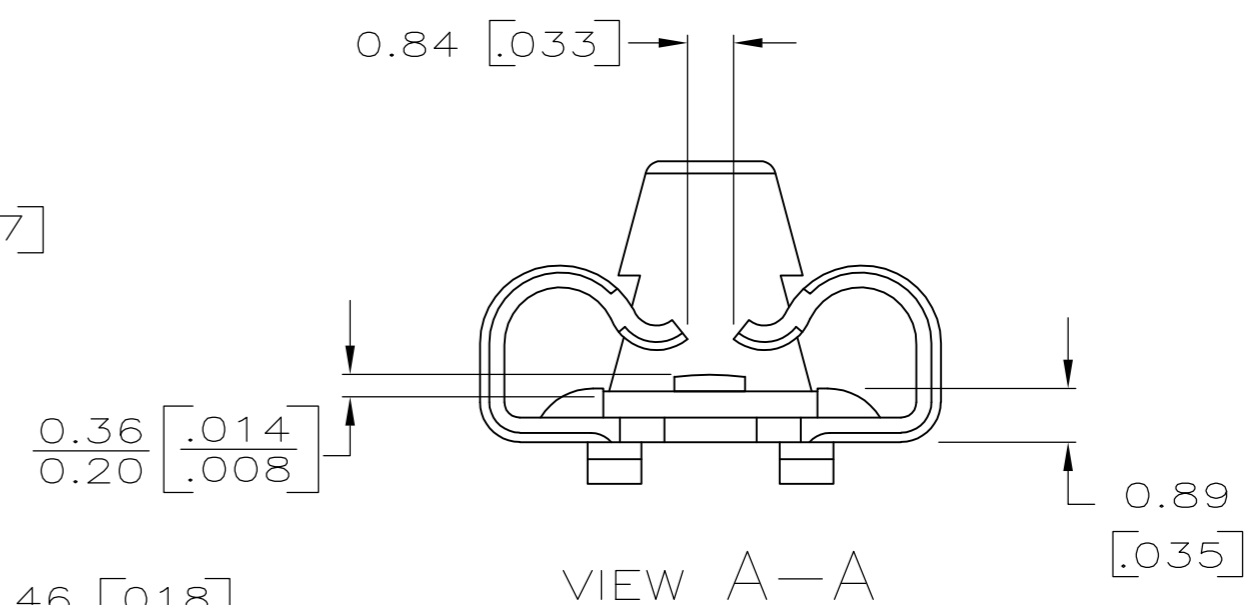
SUGGESTED MATING TAB



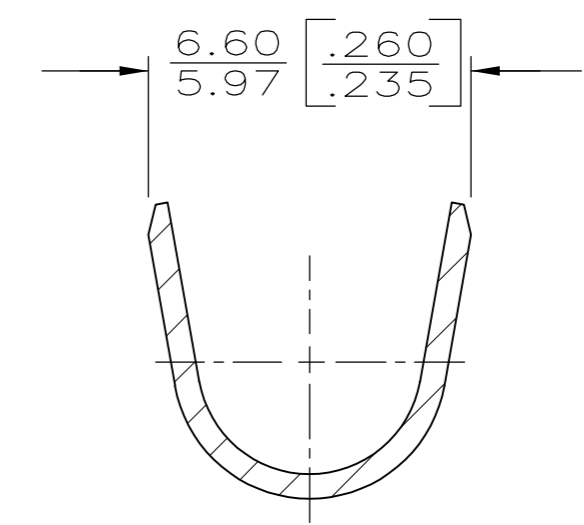
- MATL: 1/2H BRASS OR NICKEL PL STEEL.
 - NO BURRS PERMISSIBLE AT HOLE.
 - MUST BE FLAT WITHIN 0.076 [.003] OVER THIS LENGTH.
 - TIN PLATING IS REQUIRED ON BRASS WHEN TERMINAL TEMP. IS OVER 225°F
 - HOLE MUST BE SYMMETRICAL ABOUT TAB Q WITHIN 0.076 [.003]
- * TO BE USED ONLY WHEN SHOULDER IS ELIMINATED.



SECTION B-B



VIEW A-A



SECTION C-C

- DIMENSIONS IN BRACKETS ARE IN INCHES.
- CONTINUOUS STRIP ON REELS.
- THE 1.40 [.055] / 1.27 [.050] DIMENSION MUST BE MAINTAINED BY THE APPLICATOR CUT-OFF TO ENSURE THE PROPER LOCKING FUNCTION OF THE RECEPTACLE.

3.81-5.08 [.150-.200]	3.0-6.0 mm ² [12-10]	63239-1
INSULATION RANGE	WIRE SIZE	PART NO

THIS DRAWING IS A CONTROLLED DOCUMENT.		DWN	JR RUTH	7/28/86		TE Connectivity			
DIMENSIONS: mm [INCHES]		CHK	G YETTER	1/23/87		NAME			
TOLERANCES UNLESS OTHERWISE SPECIFIED:		APVD	R KUZO	1/23/87		RECPT, POSITIVE LOCK, .250 SERIES			
0 PLC ± -		PRODUCT SPEC		SIZE		CAGE CODE	DRAWING NO	RESTRICTED TO	
1 PLC ± -		APPLICATION SPEC		A2		00779	C=63239	-	
2 PLC ± -		114-2074		WEIGHT		-	SCALE	SHEET	1 OF 1
3 PLC ± 0.25 [.010]		CUSTOMER DRAWING		FINISH		TIN	NTS	REV	L
4 PLC ± -				MATERIAL		BRASS			
ANGLES ± -									